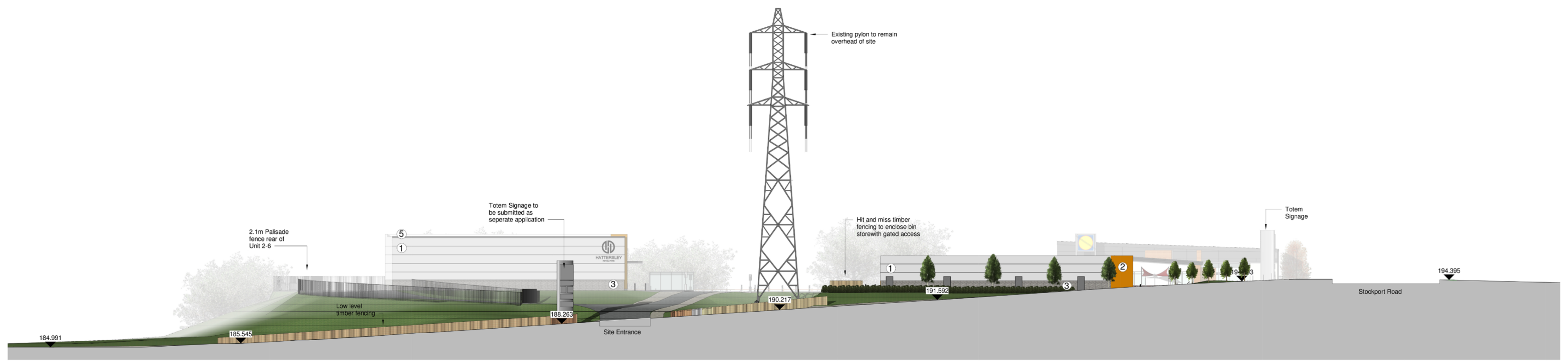


Construction staff and operatives must ensure the principle contractor has provided thorough and accurate information on all health and safety aspects relating to the designs identified on this drawing include the review of:

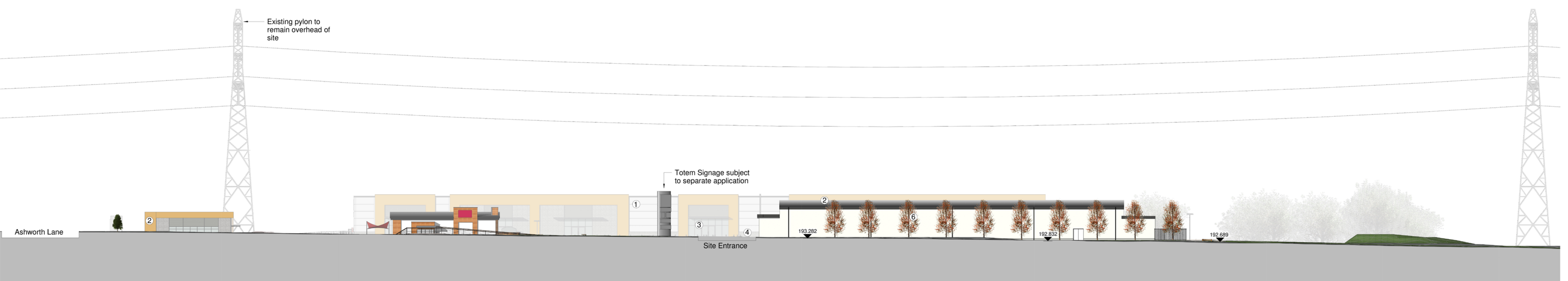
- Design/contractor risk assessments
- Method statement
- Permit to work
- The construction information

The designers note that the following health and safety risk relating to this drawing have not been eliminated during the design process:

ref	residual risk

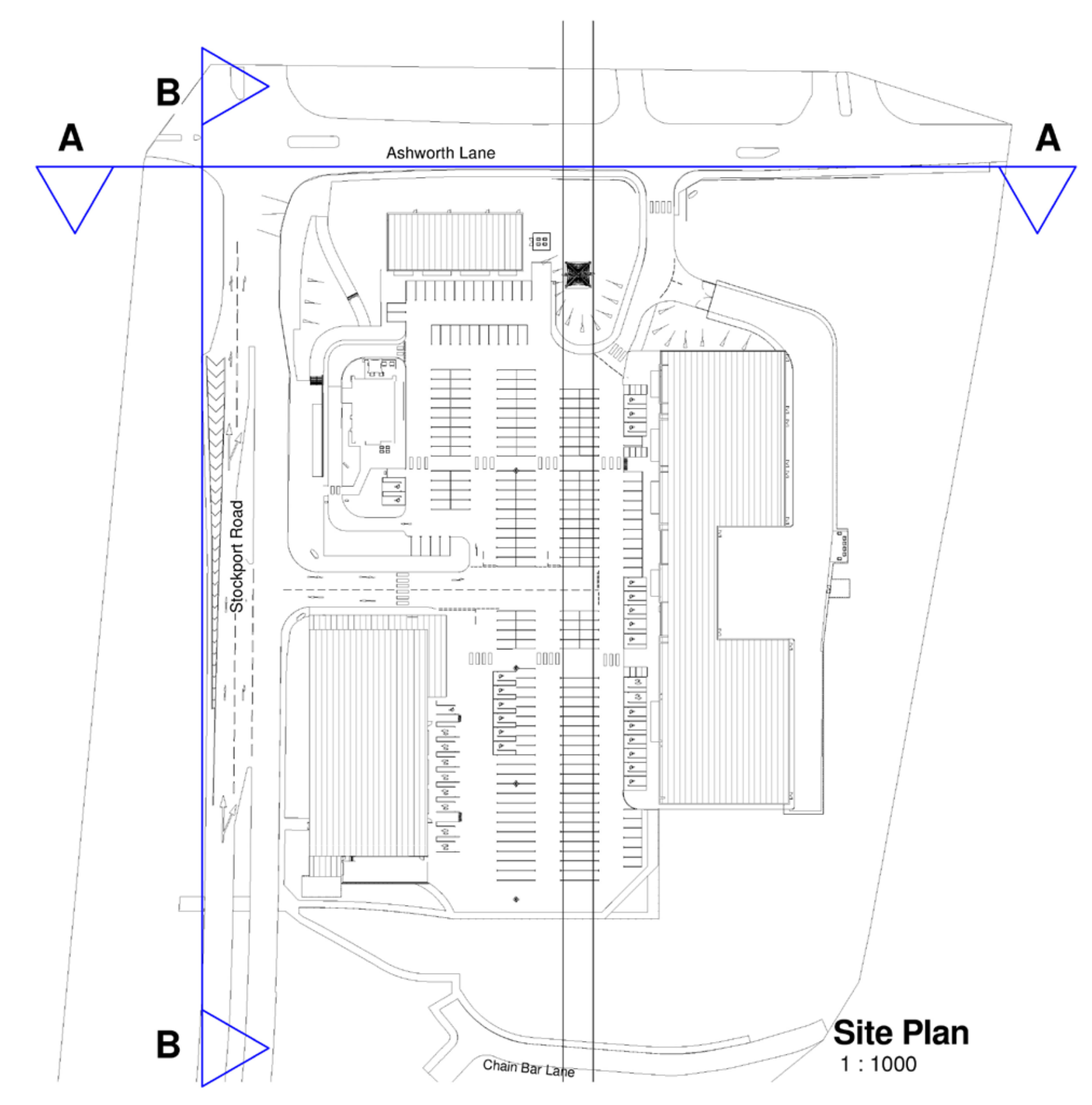


**Elevation A-A - Proposed Street Scene to Ashworth Lane**  
1 : 250



**Elevation B-B - Proposed Street Scene to Stockport Road**  
1 : 250

- Material Key**
1. Kingspan Composite Panel - Gull Grey
  2. Kingspan Composite Panel - Metallic Copper
  3. Blue Grey Brick
  4. Curtain Walling
  5. Aluminium trim - Merlin Grey
- Standard Details:**
- Unit 1
6. Wall through colour render White RAL 9100
  7. Pleth through colour render Grey RAL 7038
  8. Insulated metal panel RAL 9006



0 2 4 6 8 10  
SCALE  
1:500  
m

revision	date	by	CHK
C	08.05.18	BS	MF
B	21.12.17	WG	AW
A	06.12.17	BS	AW

All dimensions to be verified on site, and the Architect informed of any discrepancies. All drawings and specifications should be read in conjunction with the Health and Safety Plan; all conflicts should be reported to the appointed Principal Designer.  
This drawing is the copyright of Bowman Riley Architects Limited. ©  
DO NOT SCALE THIS DRAWING

preliminary     comment     construction  
 planning     tender     record

**BOWMAN RILEY**  
ARCHITECTS

Wellington House, 105 St Skipton N, Yorkshire BD23 1EL  
LEEDS | LONDON | SKIPTON  
01756 795611 | www.bowmanriley.com

**MAPLE GROVE**  
DEVELOPMENTS

drawn by	checked by	date	scale @ A0
BS	AW	11/17/17	As indicated

Hattersley, District Centre  
Hattersley

Proposed Street Scenes to  
Stockport Rd/Ashworth Lane

project number	drawing number	revision
7735	014	C

file reference: C:\Users\ben.stone\Documents\7735-BRA-Hattersley-MG-A\_Site\_Model\_ben.stone.rvt